



# GMT MONTHLY MEMBERSHIP PROGRESS REPORT

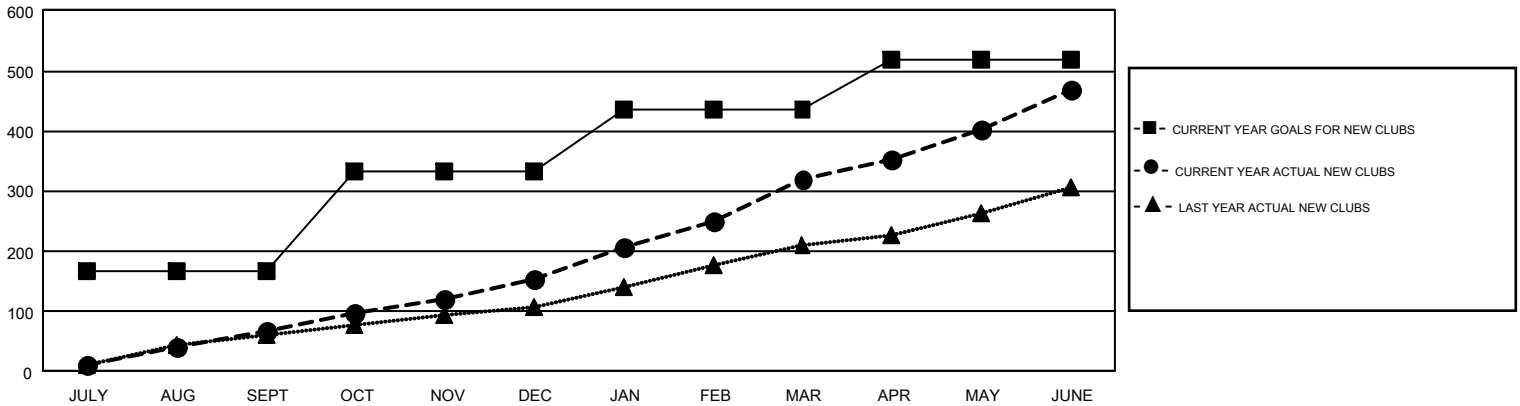
Results as of: 6/30/2017

## GMT Constitutional Area 5

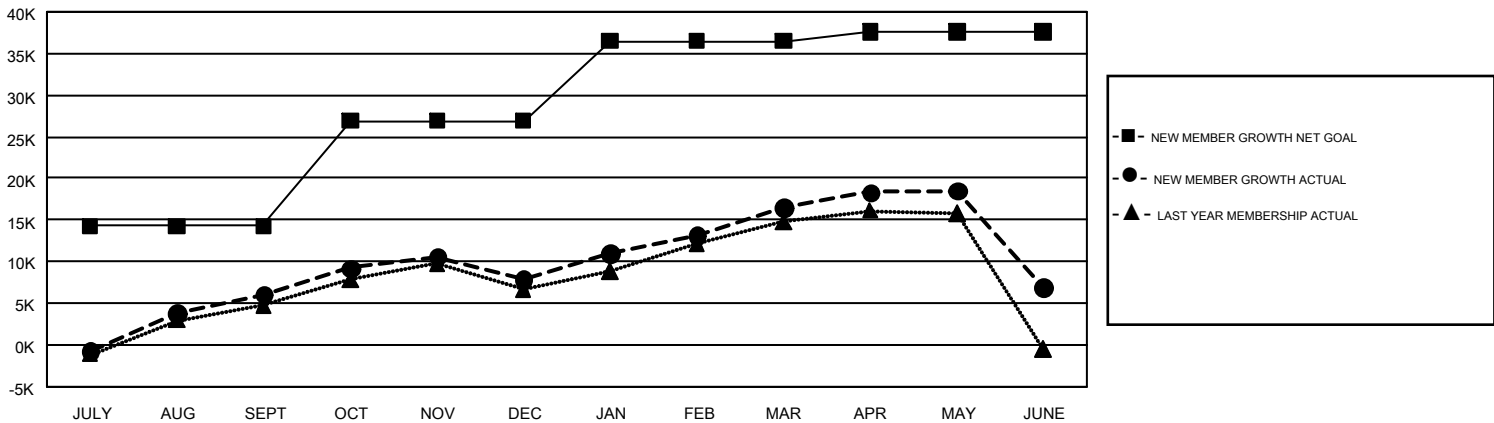
REPORT DOES NOT INCLUDE CLUBS IN UNDISTRICTED AREAS.

Clubs				Members			
RESULTS FOR 2016-2017				RESULTS FOR 2016-2017			
QUARTER	NEW CLUB GOAL	NEW CLUBS	DROPPED CLUBS	QUARTER	NEW MEMBER GROWTH NET GOAL (not reinstated or transfers)	NEW MEMBER GROWTH ACTUAL (not reinstated or transfers)	DROPPED MEMBERS ACTUAL (including transfers)
JULY/AUG/SEPT	168	67	69	JULY/AUG/SEPT	14,245	18,758	12,730
OCT/NOV/DEC	166	86	51	OCT/NOV/DEC	12,662	11,151	9,293
JAN/FEB/MAR	102	165	31	JAN/FEB/MAR	9,574	14,846	6,171
APR/MAY/JUNE	82	149	102	APR/MAY/JUNE	1,128	13,176	22,775

GOALS AND ACTUAL NEW CLUBS CUMULATIVE



GOALS AND ACTUAL MEMBERS CUMULATIVE



DROPPED CLUBS: 253	7,450 CLUBS OF 8,968 ADDED 1 OR MORE NEW MEMBERS	<b>GENDER DISTRIBUTION</b> MALE 228,326 (71.66%) FEMALE 90,307 (28.34%)
<b>DROPPED MEMBERS</b> DECEASED 1,431 CLUB CANCELLED 2,719 OTHER 46,817 <b>TOTAL 50,967</b>	<a href="#">CLICK HERE FOR CUMULATIVE MEMBERSHIP DATA</a>	TOTAL FAMILY UNIT MEMBERS 62,226 FAMILY MEMBERS PAYING HALF DUES 34,943